

항행통보

반딧불 해상풍력 해양환경조사

항행통보일	2022년 7월 29일
항행통보번호	Firefly-S-05

해양환경조사

위치	반딧불 해상풍력발전단지 및 송전선로 주변 해역
세부위치	별도 표 참조
해양조사내용	수중소음, 해양포유류, 조류, 해양물리, 해양생태계 및 수저질
예정시작일	2022년 8월 01일
예정종료일	2022년 8월 31일

<세부일정>

일자	조사항목
2022년 08월 01~02일, 30~31일	해양물리
2022년 08월 04~08일	수중소음
2022년 08월 17~20일	해양포유류, 조류

유의사항

해양환경조사선 돌핀윈드호는 울산 반딧불 해상풍력발전단지 및 송전선로 해역에서 바다새 및 해양포유류, 해양수저질, 해양생태계 등 해양환경조사를 수행할 예정입니다.

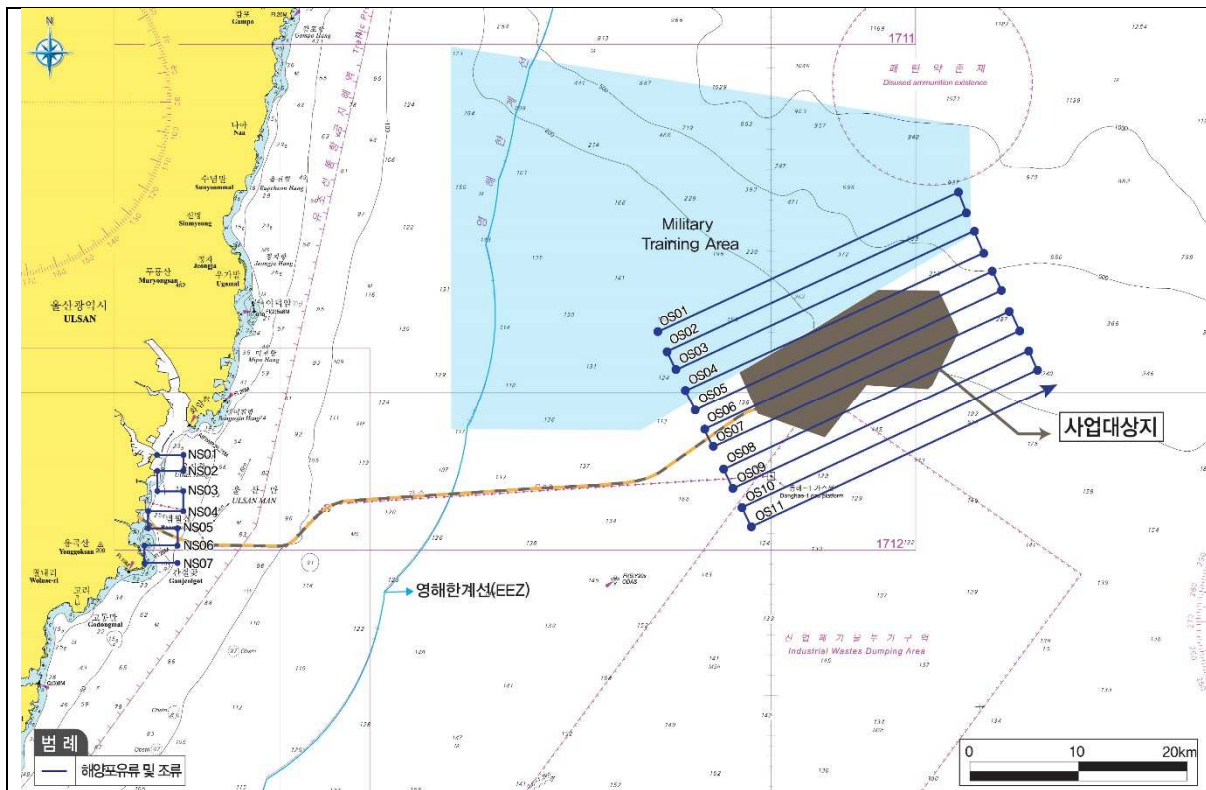
해양환경조사 중 기동능력이 제한되고 적절한 주간표식 및 항행 등을 표시할 예정입니다. 주변을 항행하는 선박은 해양환경조사선으로부터 최소 500m의 안전거리를 유지하고 항적 교란을 최소화하기 위해 속도를 줄여 운항해 주시기 바랍니다.

주요 연락처

해양조사 조정 담당자	과장 김세미 SEMK@equinor.com / 핸드폰: +82-(0)10-7768-5178
선박운항 담당자	부장 황재웅 - (주)엠타이드오프쇼어. offshorekorea@mtideoffshore.com 사무실: +82-(0)51-404-0071 / 핸드폰: +82-(0)10-5627-1727
해양조사 담당자	이사 백종진 - (주)세광종합기술단 joyhymn@empas.com / 핸드폰: +82-(0)10-3686-8431

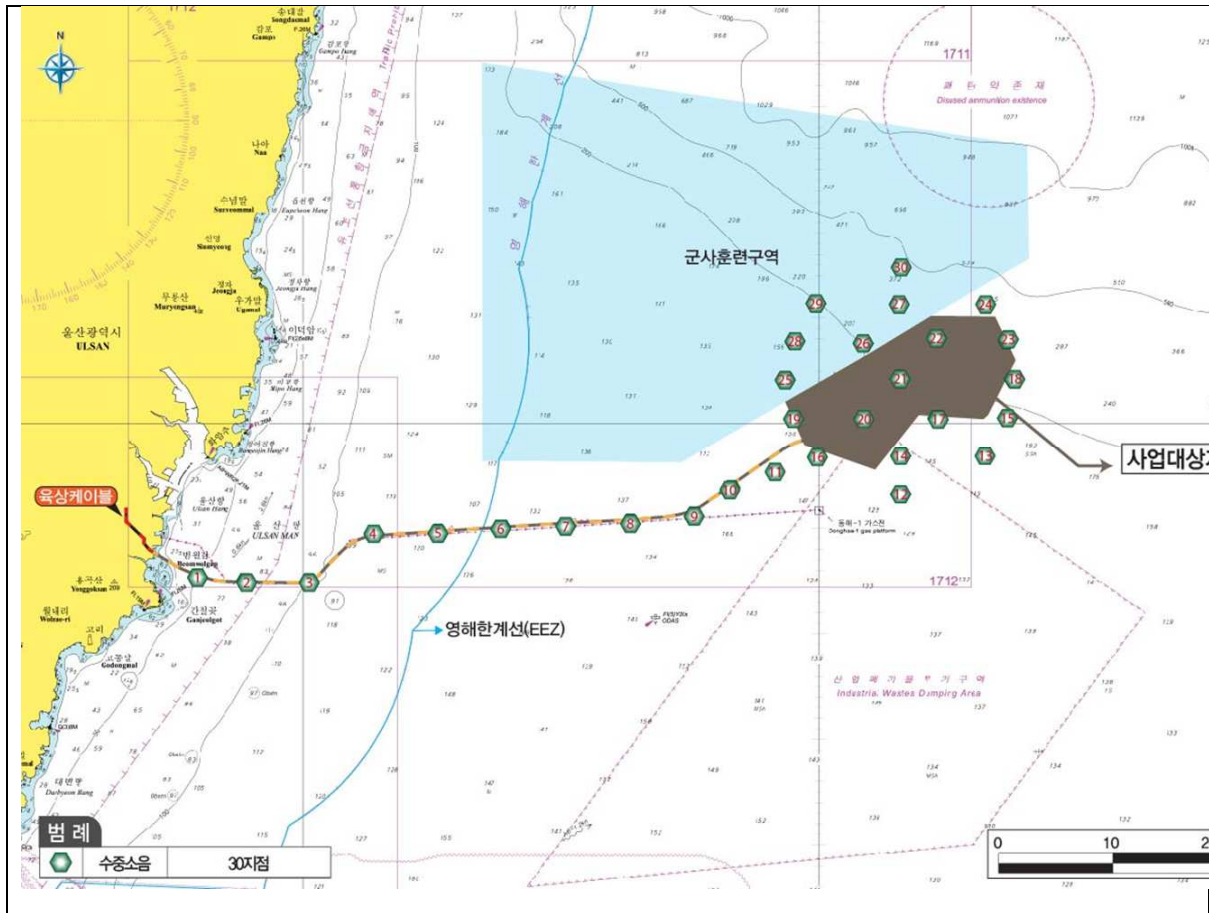
기타정보

선박명: 돌핀윈드호	선박연락처	
	콜사인	D7XA
	MMSI	441419000
	IMO	9776353
	VHF Ch.	16
	위성전화	+881-6326-77854
	선박사양	
	길이	35.53m
	폭	10.0m
	높이	4.0m
	총 톤수	293ton
건조년도	2017	
기타		
해양조사선		



해양조사정점도(해양포유류 및 조류)

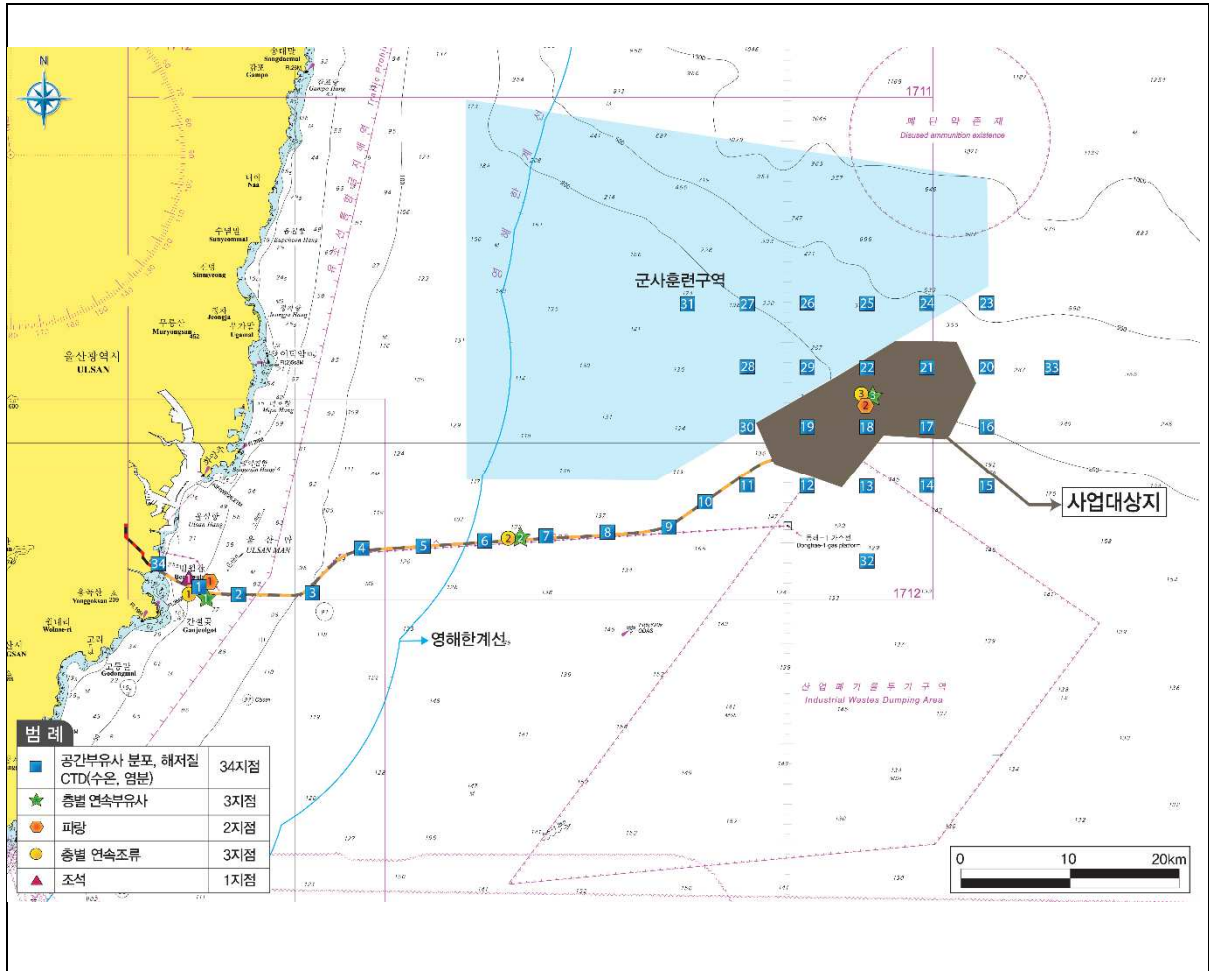
구 분		위 치	좌 표	
			위 도	경 도
NS01	Start	Nearshore transect	35°26'52.02"N	129°22'26.75"E
NS01	End	Nearshore transect	35°26'49.66"N	129°24'4.96"E
NS02	Start	Nearshore transect	35°26'3.25"N	129°22'26.56"E
NS02	End	Nearshore transect	35°26'4.00"N	129°24'4.47"E
NS03	Start	Nearshore transect	35°25'2.15"N	129°22'26.75"E
NS03	End	Nearshore transect	35°25'2.39"N	129°24'4.11"E
NS04	Start	Nearshore transect	35°24'2.61"N	129°21'52.58"E
NS04	End	Nearshore transect	35°24'3.36"N	129°24'3.96"E
NS05	Start	Nearshore transect	35°23'11.69"N	129°21'53.52"E
NS05	End	Nearshore transect	35°23'10.98"N	129°23'41.90"E
NS06	Start	Nearshore transect	35°22'20.25"N	129°21'38.86"E
NS06	End	Nearshore transect	35°22'20.31"N	129°23'42.75"E
NS07	Start	Nearshore transect	35°21'28.76"N	129°21'40.84"E
NS07	End	Nearshore transect	35°21'28.82"N	129°23'42.06"E
OS01	Start	Offshore transect	35°32'57.58"N	129°52'59.14"E
OS01	End	Offshore transect	35°39'45.00"N	130°11'21.36"E
OS02	Start	Offshore transect	35°31'57.54"N	129°53'32.31"E
OS02	End	Offshore transect	35°38'45.99"N	130°11'51.53"E
OS03	Start	Offshore transect	35°31'8.92"N	129°54'6.50"E
OS03	End	Offshore transect	35°37'53.58"N	130°12'19.69"E
OS04	Start	Offshore transect	35°30'6.97"N	129°54'40.19"E
OS04	End	Offshore transect	35°36'48.21"N	130°12'54.65"E
OS05	Start	Offshore transect	35°29'9.19"N	129°55'16.46"E
OS05	End	Offshore transect	35°35'55.57"N	130°13'23.61"E
OS06	Start	Offshore transect	35°28'11.75"N	129°55'51.03"E
OS06	End	Offshore transect	35°34'59.62"N	130°13'59.15"E
OS07	Start	Offshore transect	35°27'20.14"N	129°56'22.68"E
OS07	End	Offshore transect	35°33'56.07"N	130°14'28.22"E
OS08	Start	Offshore transect	35°26'11.65"N	129°57'0.81"E
OS08	End	Offshore transect	35°33'0.97"N	130°15'6.52"E
OS09	Start	Offshore transect	35°25'18.04"N	129°57'35.11"E
OS09	End	Offshore transect	35°32'0.66"N	130°15'40.44"E
OS10	Start	Offshore transect	35°24'21.68"N	129°58'7.27"E
OS10	End	Offshore transect	35°31'5.73"N	130°16'10.61"E
OS11	Start	Offshore transect	35°23'25.45"N	129°58'41.45"E
OS11	End	Offshore transect	35°30'8.60"N	130°16'45.77"E



해양조사정점도(수중소음)

구 분		조사정점		비 고
		N	E	
수중소음	St-1	35° 22.559'N	129° 23.948'E	Nearshore transect
	St-2	35° 22.367'N	129° 26.701'E	Nearshore transect
	St-3	35° 22.384'N	129° 30.403'E	Nearshore transect
	St-4	35° 24.574'N	129° 34.146'E	Nearshore transect
	St-5	35° 24.746'N	129° 37.876'E	Nearshore transect
	St-6	35° 24.932'N	129° 41.596'E	Nearshore transect
	St-7	35° 25.101'N	129° 45.329'E	Offshore transect
	St-8	35° 25.283'N	129° 49.057'E	Offshore transect
	St-9	35° 25.614'N	129° 52.800'E	Offshore transect
	St-10	35° 26.877'N	129° 54.983'E	Offshore transect

St-11	35° 27.673'N	129° 57.544'E	Offshore transect
St-12	35° 26.611'N	130° 4.856'E	Offshore transect
St-13	35° 28.422'N	130° 9.731'E	Offshore transect
St-14	35° 28.422'N	130° 4.853'E	Offshore transect
St-15	35° 30.234'N	130° 11.045'E	Offshore transect
St-16	35° 28.422'N	129° 59.994'E	Offshore transect
St-17	35° 30.234'N	130° 6.927'E	Offshore transect
St-18	35° 32.045'N	130° 11.447'E	Offshore transect
St-19	35° 30.234'N	129° 58.673'E	Offshore transect
St-20	35° 30.234'N	130° 2.773'E	Offshore transect
St-21	35° 32.045'N	130° 4.856'E	Offshore transect
St-22	35° 33.817'N	130° 6.927'E	Offshore transect
St-23	35° 33.817'N	130° 11.081'E	Offshore transect
St-24	35° 35.585'N	130° 9.791'E	Offshore transect
St-25	35° 32.045'N	129° 58.253'E	Offshore transect
St-26	35° 33.817'N	130° 2.773'E	Offshore transect
St-27	35° 35.585'N	130° 4.853'E	Offshore transect
St-28	35° 33.817'N	129° 58.619'E	Offshore transect
St-29	35° 35.585'N	129° 59.909'E	Offshore transect
St-30	35° 37.376'N	130° 4.856'E	Offshore transect



해양조사정점도(해양물리)

구 분		조사정점		비 고
		N	E	
연속부유사 연속조류	PC-1	35°22' 36.01"N	129°24' 00.64"E	Nearshore transect
	PC-2	35°25' 04.73"N	129°42' 22.56"E	Offshore transect
	PC-3	35°30' 39.22"N	130°04' 49.95"E	Offshore transect
공간분포	GS-01	35°22' 33.56"N	129°23' 56.88"E	Nearshore transect
	GS-02	35°22' 22.03"N	129°26' 42.60"E	Nearshore transect
	GS-03	35°22' 23.02"N	129°30' 24.21"E	Nearshore transect
	GS-04	35°24' 34.42"N	129°34' 8.79"E	Nearshore transect
	GS-05	35°24' 44.77"N	129°37' 52.59"E	Nearshore transect
	GS-06	35°24' 55.89"N	129°41' 35.76"E	Offshore transect

GS-07	35°25' 6.80"N	129°45' 19.74"E	Offshore transect
GS-08	35°25' 16.99"N	129°49' 3.43"E	Offshore transect
GS-09	35°25' 36.87"N	129°52' 47.99"E	Offshore transect
GS-10	35°26' 52.59"N	129°54' 58.97"E	Offshore transect
GS-11	35°27' 40.39"N	129°57' 32.62"E	Offshore transect
GS-12	35°27' 37.90"N	130°1' 10.35"E	Offshore transect
GS-13	35°27' 34.95"N	130°4' 48.83"E	Offshore transect
GS-14	35°27' 36.86"N	130°8'27.49"E	Offshore transect
GS-15	35°27' 35.22"N	130°12'4.14"E	Offshore transect
GS-16	35°30' 34.18"N	130°12' 04.58"E	Offshore transect
GS-17	35°30' 32.33"N	130°08' 26.35"E	Offshore transect
GS-18	35°30' 35.50"N	130°04' 49.75"E	Offshore transect
GS-19	35°30' 34.46"N	130°01' 11.17"E	Offshore transect
GS-20	35°33' 31.80"N	130°12' 07.39"E	Offshore transect
GS-21	35°33' 32.10"N	130°08' 28.78"E	Offshore transect
GS-22	35°33' 32.50"N	130°04' 51.47"E	Offshore transect
GS-23	35°36' 44.71"N	130°12' 07.66"E	Offshore transect
GS-24	35°36' 44.19"N	130°08' 30.49"E	Offshore transect
GS-25	35°36' 45.31"N	130°04' 52.97"E	Offshore transect
GS-26	35°36' 47.83"N	130°01' 14.69"E	Offshore transect
GS-27	35°36' 46.58"N	129°57' 35.75"E	Offshore transect
GS-28	35°33' 37.10"N	129°57' 36.05"E	Offshore transect
GS-29	35°33' 33.98"N	130°01' 13.72"E	Offshore transect
GS-30	35°30' 37.52"N	129°57' 32.96"E	Offshore transect
GS-31	35°36'46.56"N	129°53'54.72"E	Offshore transect
GS-32	35°24'3.00"N	130° 4'56.16"E	Offshore transect
GS-33	35°33'31.80"N	130°16'8.70"E	Offshore transect
GS-34	35°23'44.88"N	129°21'34.98"E	Nearshore transect